



# *A Time for Change*

---

Environmental Sustainability Plan  
2024-2028

A young duckling with dark, fluffy feathers is swimming in a pond. The water is a deep blue, and there are several large, green lily pads floating around it. The duckling is in the lower half of the frame, facing right. A large white circle is overlaid on the upper half of the image, containing text.

### Acknowledgement of Country

*Centennial Park acknowledges the Kurna people as the traditional custodians of the Adelaide Plains and pay respects to Elders past, present and emerging. We recognise and respect their cultural heritage, beliefs and relationship with the land.*

*We acknowledge that they are of continuing importance to the Kurna people living today.*

# Introducing our Plan

**At a time when the natural environment of our world is in crisis, we acknowledge the critical role we all play to tackle effects of global warming and nature loss.**

Centennial Park is a special community space that plays a role in the wellbeing of so many. From families and friends who come to commemorate their loved ones here, visitors and community members who enjoy our beautiful green spaces, and the diverse wildlife that call our Park home.

As custodians of this exceptional space, we recognise the need to not only care for this beautiful environment but enhance it for generations to come.

The Centennial Park Environmental Sustainability Plan 2024–2028 outlines our commitment to minimising the impact of our operations while maximising the positive contribution we make to the environment.

The plan is built on a strong foundation of our past actions and achievements whilst maintaining a beautiful, abundant and sustainable place to commemorate loved ones and to visit for recreational and social purposes.

The new goals were formed following extensive research and collaboration with experts who thoughtfully considered the biodiversity of our Park, the changing environment, climate resilient operations as well as environmentally conscious funeral and memorial choices.

Collaboration is integral to the success of this plan which has been developed in alignment with the South Australian Government's environmental vision, to conserve, sustain and prosper.

I am exceptionally proud of the goals we have set out which are critical for the sustainable evolution of our Park.

We hope to create influence by sharing ideas and working with our team, families, neighbouring community members, funeral directors and suppliers, all of whom play an active role in the achievement of our desired environmental outcomes for the Park.

Regards

**Janet Miller**  
CEO Centennial Park

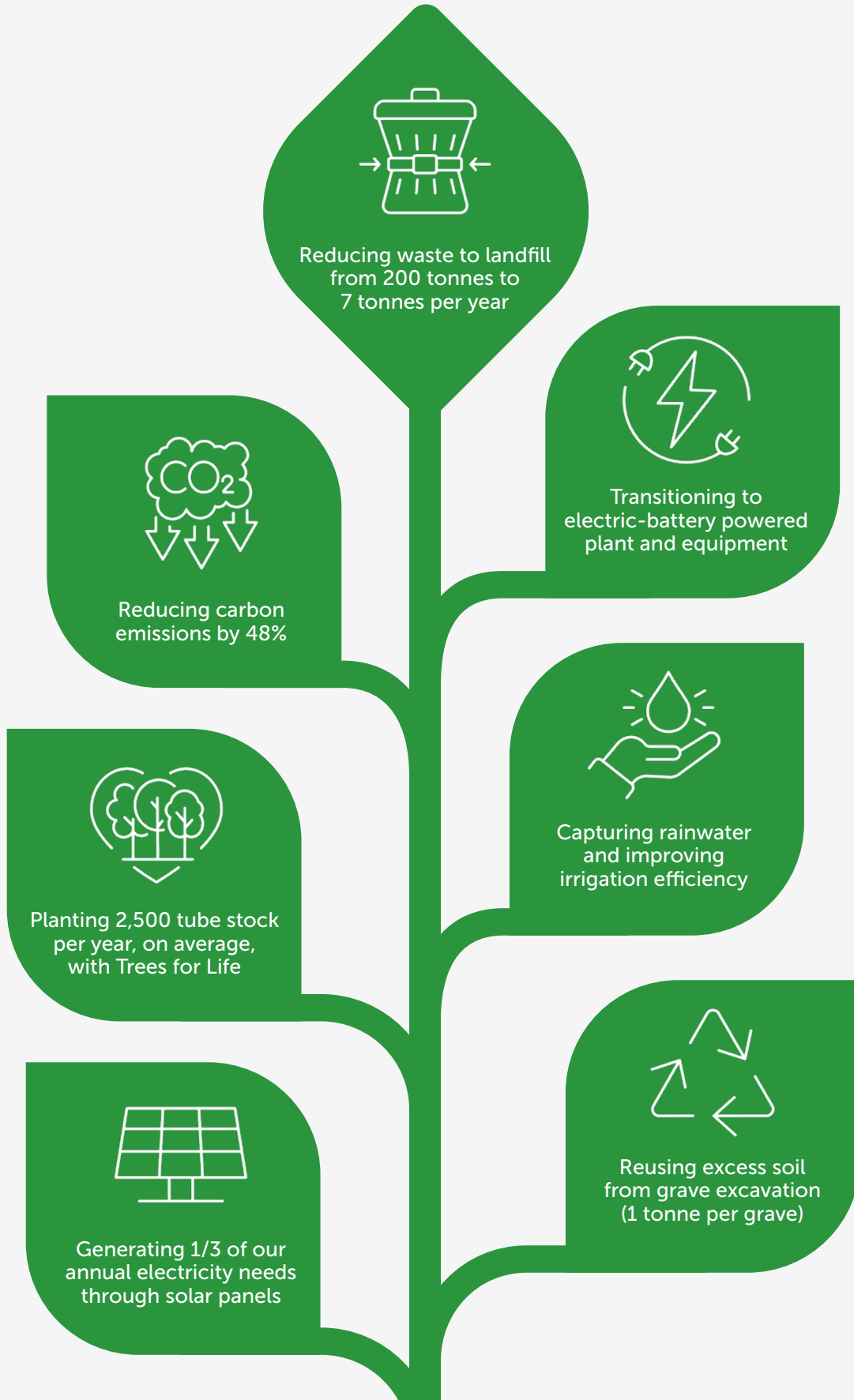




# Environmental Sustainability Achievements

Improving the way we operate, work, deliver services and care for the Park forms part of our commitment to support the environment and reduce our impact.

Our environmental achievements to date include:





# Snapshot of our Environmental Sustainability Plan

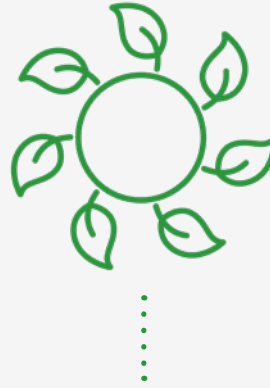
Five key themes form the foundation of our Environmental Sustainability Plan, each with their own initiatives and goals.

## Resilient



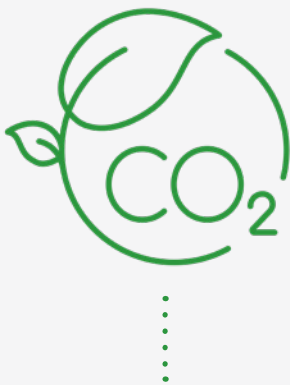
Adapting to our changing climate

## Vibrant



Enhancing our natural spaces and habitat

## Decarbonise



Developing a net zero carbon emissions pathway

## End-of-life choices



Integrating sustainable options

## Connected



Driving education, connection and wellbeing

The above themes and the subsequent actions for each, have been developed in alignment with the Sustainable Development Goals (SDGs) identified by the United Nations to tackle the environmental challenges faced by our planet and achieve a more sustainable future for all.







## Resilient in action

With hotter temperatures and extreme weather trends predicted to continue, we need to adapt the way we operate and put plans into place that strengthen the Park's climate resilience. Through identified initiatives, we will introduce sustainable development design and management concepts that future proof the Park for generations to come.

### Sustainable Development

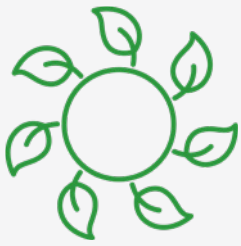
- Increase vegetation cover to cool and shade heat exposed areas
- Increase the proportion of the Park's electricity generated by solar power
- New paths with natural paving incorporating light coloured pavements
- Renewable energy and battery storage installation

### Water Optimisation

- Introduce more native climate resilient plantings to support climate regulation and biodiversity
- Optimise irrigation to relieve reliance of potable and bore water
- Maximise use of rain water for tree and garden irrigation
- Reduce heat island effect in non-irrigated areas
- Increase plant biodiversity to support heat reduction and wind effect to reduce soil water loss

### Climate Engagement

- Develop and rollout a climate adaptation plan to future-proof the Park
- Collaborate with organisations to optimise resources and address the challenges of climate change



## Vibrant in action

Environmental sustainability is not just about the environment alone. We recognise the role of connection with our natural space and the restorative benefits it provides to those grieving.

In our role as stewards, we recognise the importance of influencing better outcomes for nature within the Park and creating community awareness of its value and the role we all play to care for the environment and influence change.

### Increased Biodiversity

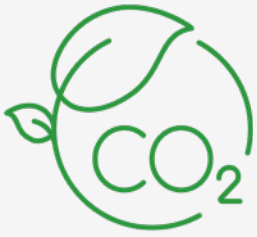
- Landscaping development that supports the plant, animal and insect species that live in the Park
- Increase native vegetation and plantings
- Increase habitat for species to thrive
- Utilise organic landscape and gardening products
- Engage the wider community to bring awareness and involvement

### Landscape Planning

- Enhance vegetation cover to increase cooling and protect natural spaces
- Introduce native plant species to beautify burial sites and other areas
- Reduce traffic noise and expand functional areas along the eastern boundary

### Research Collaboration

- Collaborate with research institutions on soil nutrition, irrigation optimisation and healthy habitats



## Decarbonise in action

In line with the agreements of global governments to achieve net zero by 2050, we will do our bit to minimise and offset emissions while continuing to deliver our core purpose of providing end of life services.

### Electrification

- Use 100% renewable energy
- Electrify passenger fleet vehicles
- Electrify operating fleet vehicles
- Optimise solar PV generation and explore battery storage

### Further Decarbonisation

- Implement strategies that reduce energy use
- Introduce waste management opportunities and further reduce landfill waste
- Research ways to reduce or replace natural gas use in cremators
- Source low carbon or carbon neutral goods and services
- Reduce internal printing
- Share ways that encourage employees to reduce commuting emissions

### Carbon Sequestration

- Develop healthy soil and plant ecosystems
- Measure the reduction in carbon of vegetation across the Park
- Purchase carbon offsets that remove greenhouse gases from the atmosphere



## End-of-life Choices in action

More than ever, there is a generational movement towards alternative and green end-of-life choices. We need to adapt to meet the increasing demand for sustainable and less emission intensive end-of-life memorial choices. Further, as our population ages, we need to consider this in terms of the development of the Park.

### Green Memorials

- Reduce the impact of cremations by sourcing and implementing an alternative to gas power
- Continually work with faiths, families and funeral directors to reduce energy and waste through greener memorial options

### Sustainable Choices

- Explore sustainable end-of-life choices and consider their potential for the Park
- Collaborate with organisations nationally and internationally to identify potential end-of-life alternatives

### Sustainable Tributes

- Share tribute guidelines that educate visitors on sustainable eco-friendly tribute choices
- Encourage less carbon-intensive grave adornments and memorials



## Connected in action

Human health and wellbeing is linked to nature and environment. Our plan would not be complete without a focus on how the natural values and assets of our Park will benefit our community, and how our community plays an integral role in achieving our environmental objectives.

### Community Amenity

- Support the physical and mental wellbeing of our community through comfortable, protected and enhanced spaces
- Evolve public spaces to create greater connection, accessibility and climate protection
- Develop accessible walking paths and wayfinding separated from road traffic
- Educate and engage with the wider community through initiatives and events

### Employee and Community Engagement

- Educate employees on environmental matters and encourage them to take sustainable actions both in the workplace and their everyday lives
- Engage with our community to enhance our natural spaces
- Establish an internal Environment Committee to connect regularly on our ESP progress and to keep us accountable

### Reputation and Influence

- Promote environmental sustainability actions and outcomes
- Lead and advocate on the evolution and collaboration to green the end-of-life sector



# Tracking our Goals

As the initiatives, changes and strategies we have committed to are rolled out at Centennial Park, we will monitor and share updates on our initiatives.

This ensures we remain accountable, adapt any of our strategies and keep partners and community informed on what we have achieved and how they have been central to the successful delivery of our plan.

## 2024



Adopt a sustainable development approach through:

- Climate risk assessment and adaptation plan
  - Biodiversity management plan
  - Decarbonisation plan
  - Cemetery master plan
  - Traffic management plan
- 
- Establish a waterwise environment by improving irrigation efficiencies to reduce water usage
  - Plant native and drought tolerant plants and vegetation to reduce our dependence on water and to create microclimates that help reduce heat
  - Biodiversity enhancements to help our various plant, animal, bird and insect species thrive across diverse habitats
  - Electrify 100% of our vehicle fleet and install EV charging stations across the Park
  - Expand onsite solar capacity by installing more solar panels
  - Use of 100% renewable energy
  - Reduce carbon emissions per year
  - New waste management and recycling initiatives
  - Continue to reduce waste to landfill
  - Minimise crematorium impact by sourcing alternative fuel options to gas fired cremators
  - Explore and introduce alternative green end-of-life memorial choices
  - Staff and community engagement
  - Internal Environmental Committee established



## 2028





# *A Time for Change*

---



---

760 Goodwood Road,  
Pasadena SA 5042

08 8276 6011  
[enquiry@centpark.org.au](mailto:enquiry@centpark.org.au)

[www.centennialpark.org](http://www.centennialpark.org)  
[f/centennialparkcemetery](https://www.facebook.com/centennialparkcemetery)